

F20- 192mm middle size pipe size 1/2"-3/4"



// Product Features·Use

- 4 design innovations to improve usability:
New body design: Decreases the vibration when working which stabilises flow distribution./ New indicator design: Easily adjustable and positionable./Thickened threads for caps: Caps are easy to be locked even under bad concentricity./ Models with and without guide rods are able to share the same adaptors.
- Patented dual-indicator design for easy and clear flow range management.
- Laser engraved degree scales provide better readability and longer life.
- Available in customizable units, temperature, and molecular weight.

// Standard Specs

- Model: F20PC, F20PSU, F20H PSU
- Adaptor Size: 1/2", 3/4"
- Applicable Fluid: Liquid
- Flow direction: From the bottom up
- Engraved degree scales: Laser engraved degree scales
- Fluid Temperature: 50°C (Standard: UPVC adaptor)
60°C (PP adaptor)
- Working Pressure: 5.0kg/cm²
- Full Scale Accuracy: ±5% F.S.

• Product Material

Body - PC, PSU
Float - Stainless 316, Hastelloy C
Guide Rod - Stainless 316, Ti, Hastelloy C
Guide Rod Bottom - PP
Adaptor - Welding Type: UPVC
Male, Female Thread: UPVC, PP
Butt-fusion Adaptor: PP
Union Nuts - UPVC, Aluminum
O-ring - EPDM, VITON

• Adaptor Material

Welding Type, Male Thread, Female Thread,
Butt-fusion Adaptor

// Scale Range

Product Code	Scale Range ※ 1 ※ 2 (L/min)
F20-10LPM	1.0-10/S,H
F20-15LPM	1.5-15/S,H
F20-20LPM	2.0-20/S,H
F20-30LPM	3.0-30/S,H
F20-40LPM	4.0-40/S,H
F20-50LPM	5.0-50/S,H

- ※ 1.Liquid flow meters are calibrated for 20°C water.
※ 2. " / "float material, S- Stainless 316, H- Hastelloy C.

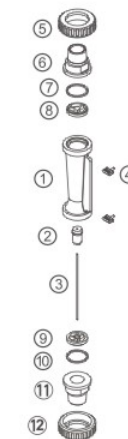
// Maximum working temperature for different adaptor materials

Adaptor Types	Maximum working temperature materials		
	~ 50°C	~ 60°C	~ 70°C
Welding Type	UPVC	-	-
Male / Female Thread	UPVC	-	-
Butt-fusion Adaptor	-	PP	-

- ※ When maximum working temperature is over 50°C, the material for guide rod bottom and union nuts have to be PSU and aluminium.

※ BSPT is standard thread type. NPT is available for custom order.

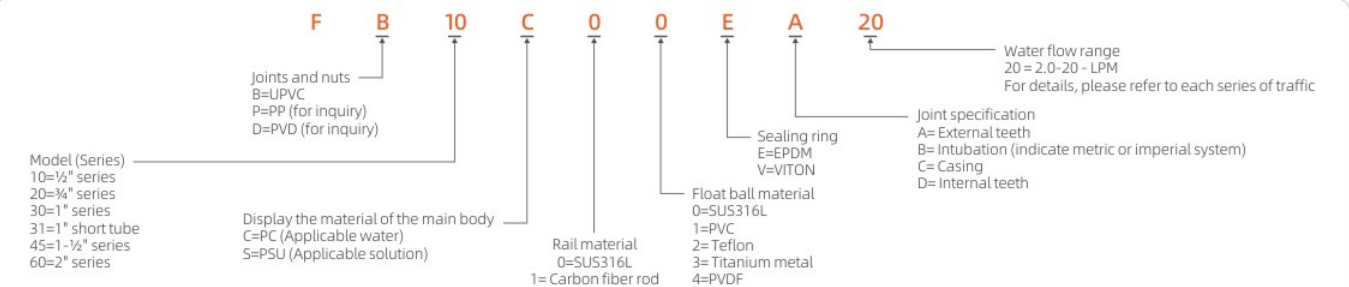
// Parts Material



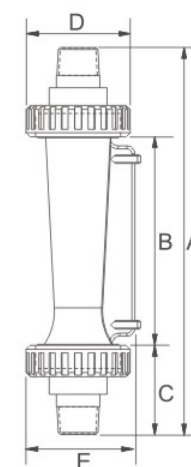
No.	Series	Material (Main material)※			
		1	2	3	4
1	Body	PC	PSU	PSU	PSU
2	Float	S316	S316	Hastelloy C	PVC
3	Guide Rod	S316	S316	Ti	Hastelloy C
4	Pointer	PP	PP	PP	PP
5,12	Union Nuts	UPVC	UPVC	UPVC	UPVC
6,11	Adaptor	UPVC	UPVC	UPVC	UPVC
7,10	O-ring	EPDM	VITON	VITON	VITON
8,9	Guide Rod Bottom	PP	PP	PP	PP

※ Material for different parts is optional for each flowmeter.

// Order Selection Table



// Parts Size



Adaptor Spec	A	B	C	D	E
3/4"Male Thread	192	102	45	51	56
3/4"CNS	194	102	46	51	56
3/4"ASTM	195	102	46.5	51	56
3/4"JIS	194	102	46	51	56
3/4"DIN	195	102	46.5	51	56
1/2"Male Thread	182	102	40	51	56
1/2"Female Thread	192	102	45	51	56
1/2" PP Female Thread	192	102	45	51	56
1/2"CNS	184	102	41	51	56
1/2"ASTM	184	102	41	51	56
1/2"JIS	184	102	41	51	56
1/2"DIN	187	102	42.5	51	56
PP OD20 ID15.3	192	102	41	51	56.5

※ Unit: mm